



Yorke Road, Reigate

Offers in Excess of £750,000





“

Located in a popular central Reigate location within easy walking distance of the town and station this stunning home has been lovingly extended and updated and is perfect for anyone looking for a little extra space.

”



This stunning period home is located in a popular central Reigate location, within a few minutes walk to the High Street as well as the train station and the Castle Grounds. There are excellent local schools within walking distance too, Micklefield, Holmesdale and Priory to name a few!

Inside the property has been sympathetically updated and extended by the current owners, making it perfect for modern family life. The extended kitchen, living space overlooks the pretty, South facing rear garden making it a bright and sunny space.

Upstairs there are three good size bedrooms as well as a study or nursery laid out over two floors.. The family bathroom has been stylishly updated and there is an en suite wet room to the top floor bedroom. The wonderful views from the top floor look out to the hills in the distance, creating a stunning backdrop.



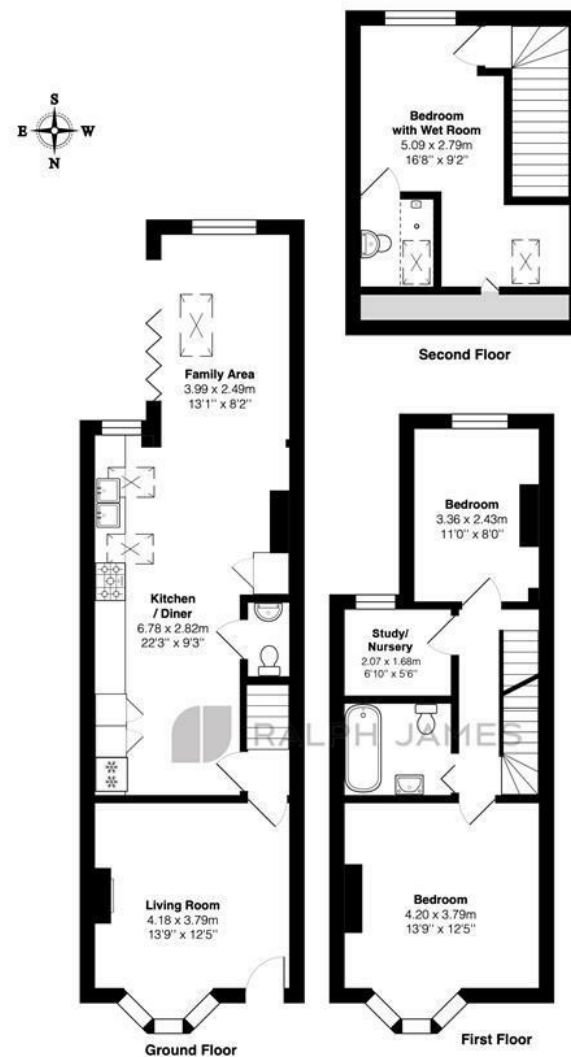
Need to know

- Popular central Reigate location just a few minutes walk to the Castle Grounds and Reigate High street
- Beautifully presented semi-detached home
- Three bedrooms split over two floors and a separate study/ nursery
- Light open plan kitchen/dining area at the rear that has been extended and refurbished to a great social space
- Bi-folding doors create an even more open feel to downstairs
- Separate living room
- Private garden that has been designed for style and ease
- Family bathroom & master en-suite
- EPC Rating - D
- Council Tax Band - D

Interested?

reigate@ralphjames.co.uk
01737 333677

www.ralphjames.co.uk
@ralphjamesestateagents



Yorke Road, Reigate

Total Area: 111.7 m² ... 1203 ft²

FOR ILLUSTRATIVE PURPOSES ONLY.

Whilst every attempt has been made to ensure the accuracy of the floor plan shown, all measurements, positioning, fixtures, features, fittings and any other data shown are an approximate interpretation for illustrative purposes only and are not to scale.

No responsibility is taken for any error, omission, miss-statement or use of data shown.

The above statement applies to both 'Still Moving London LTD' and the Company or individual displaying this floor plan.

Unauthorised reproduction prohibited.

© Still Moving London LTD (www.stillmoving.london)

RALPH JAMES